



Building for the Future

# FUTURE BUILDINGS



**DO-IT-YOURSELF STEEL BUILDINGS**

**Create Lasting Space in Your World**



## WELCOME TO FUTURE BUILDINGS



Marcel Aitoro created Future Buildings almost 40 years ago and created the standards of excellence back then that are the reason for the great strides the company continues to make year after year in the marketplace. He began what has been a life's commitment to bringing a viable and economical steel building solution to both residential and commercial industries.

The philosophy at Future Buildings has always been simple – understand each customer's need, solve it and deliver it – on-time and on-budget. That was how Marcel approached his business back in the early 80's when as a very small company Future Buildings began by first producing Quonset

buildings for First Nations bands, farmers, loggers, fishermen, mining managers and truck drivers across Canada. That same basic customer service formula is still the core principle of the business today earning Future Buildings a reputation as one of the leading manufacturers of pre-fabricated steel buildings all across North America as well as internationally.

Whether it is a backyard workshop for a resident of northern Ontario, a storage building or barn for a farmer in Nebraska or a massive salt refinery in Russia... Marcel is truly grateful for every customer around the world that chooses Future Buildings.

2




Find out more by calling us at **1-800-668-5111** or visiting **FutureBuildings.com**



## FACTORY DIRECT The Best Building Solutions at the Best Price

Future Buildings is proud to employ expert engineering, production and customer service professionals. The codes and certifications of our state-of-the-art, fully automated production facility operate with a diligent adherence to industry standards of excellence, quality assurance and “green building” efforts. Our factory and head office work together every day approaching each building project with a shared commitment to providing the best steel building solution at the best price.

**40 YEAR RUST PERFORATION WARRANTY**

Under normal climates and circumstances, your building will be totally resistant to the damaging effects of rust. All Future Buildings are backed by a 30 Year Rust Perforation Warranty for your total confidence in long term durability.

## DECADES OF DURABILITY Galvalume Plus™

All Future Buildings are manufactured from the world's best steel, Galvalume Plus™. Our steel sheets are hot dipped in an aluminum-zinc alloy followed by a clear organic resin coating, making it superior in strength, highly resistant to corrosion with an overall attractive finish. Future Buildings will outlast other materials every time!

- 7 times more rust resistant than galvanized steel
- Thicker than traditional steel buildings
- Excellent heat reflectivity creating a cooler interior in warmer months

3



## DELIVERED WORLDWIDE Future Buildings Are Everywhere

Every day we are delivering steel buildings with our own fleet of trucks across North America. We also export internationally giving Future Buildings a global presence in dozens of countries around the world for use in agriculture, mining, military and infrastructure development and recovery.

# TRUE PRICING



Every FUTURE BUILDING is individually priced to meet your needs and the loads and codes for YOUR exact location. CALL TODAY FOR TRUE PRICING.



## FUTURE BUILDINGS - A Model

The A Model features straight sides and a peaked roof giving it one of the most popular and conventional appearances. Although our customers choose this style for every application, it was developed largely for backyard garages and workshops because of its traditional looking front and ability to blend in with other residential properties.

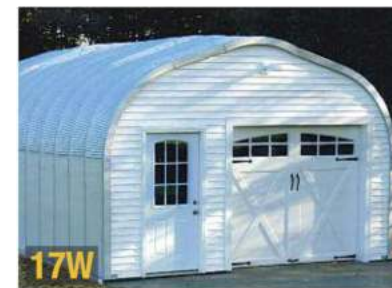
Available in standard sizes ranging typically in widths from 16' to 70' wide with varying center heights and unlimited lengths.

### Our Customers Have Built:

- Single Garages
- Double Garages
- Workshops
- Woodworking Shops
- Repair Shops
- Utility Sheds
- Yard Storage Sheds
- Boat Storage
- RV and Camper Storage



4



Find out more by calling us at **1-800-668-5111** or visiting **FutureBuildings.com**





**“LOVE THE DO-IT-YOURSELF SIMPLICITY OF MY GARAGE”**

“It took us a few days to finish my Future Buildings garage but I know I saved a lot of money putting it up myself. I had some great neighbors that pitched in and lifted and bolted with me. Now I have space for all my toys with wheels.”

Paul - Anson, Maine



**“HAPPINESS IS GETTING MY OWN WOODWORKING SHOP”**

“For the longest time my house was my shop. I finally decided it was time. So I wired and insulated a Future Building and now I can be found in my new woodworking shop with my radio on making a canoe, laminating a paddle or fixing up a neighbor’s broken shelf. It’s warm, roomy and it’s all mine. The ultimate “man-cave”!”

Jack - Kincardin, Ontario



25W



20W

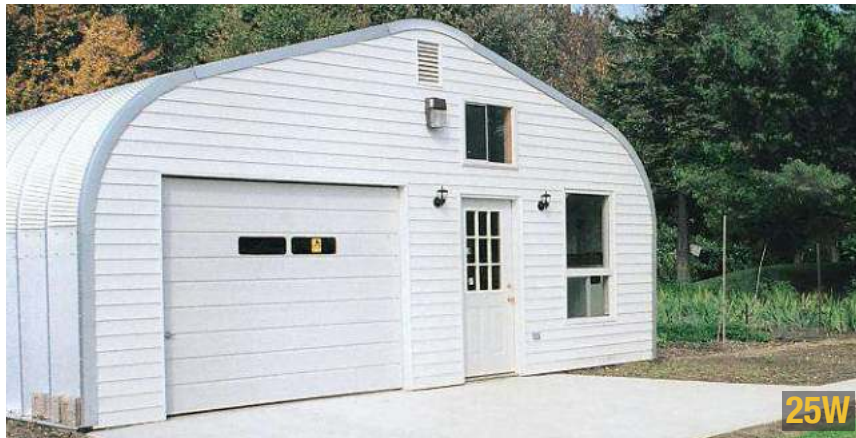


25W



25W

5



25W



30W



30W



30W

**DID YOU KNOW?**



Our average backyard garage or workshop can be assembled in as little as 3 days!

# FUTURE BUILDINGS - X Model

Our X Model is similar in appearance to the A Model but with the design of the peaked roof and sloped sides, it offers superior strength at increased heights. The X Model is a popular selection for our customers because it is a great service building for field and farm buildings as well as larger maintenance garages.

Available in standard sizes ranging typically in widths from 20' to 80' wide with varying center heights and unlimited lengths.

## Our Customers Have Built:

Garages • Hobby Shops • Auto Dealerships • Mechanic Repair Shops • Livestock and Grain Barns • Industrial Storage • Retail Stores  
Rural Retail Outlets



6



Find out more by calling us at **1-800-668-5111** or visiting **FutureBuildings.com**





**“I WISH WE HAD BUILT THIS YEARS AGO”**

“If I knew we would have a great big double garage with space left over for my retired husband to putter in, I would have bought a Future Building a long time ago. I was only too happy to help him put it up because I knew I would get all those dusty, noisy tools out of the house!”

Sandy - Tucson, Arizona



**“A FAMILY THAT BUILDS TOGETHER...”**

“When it was time for a new barn, I purchased the Future X-Model. They told me it was a “lift the arch and bolt-together” process. Sounded easy enough. So I told my sons that they needed to give their old man a hand with his new building. They did and it went up just like it was supposed to. It is a strong, sturdy building that will be around a good long time!”

Chuck - Carvel, Alberta



**35W**



**30W**



**30W**



**30W**



**40W**



**30W**



**30W**

**TRUE PRICING**



Every FUTURE BUILDING is individually priced to meet your needs and the loads and codes for YOUR exact location. CALL TODAY FOR TRUE PRICING.



# FUTURE BUILDINGS - S Model

The S Model features straight side walls with a clear span arched roof. The benefit of the straight wall panel design is that it increases the side wall clearance allowing for storage of large equipment or machinery. The interior space in the S Model is optimum and many customers elect for this design when they are considering their needs for large storage capacity.

Available in standard sizes that range from 10' to 90' wide with varying center heights and unlimited lengths.

## Our Customers Have Built:

Garages • Studios • Storage Facilities • Warehouses • Cottages • Boat Houses  
Residences • Community Service Buildings



**"One Long Weekend...  
One Great Garage"**



"My buddies and I have been going to the same hunting camp for over 20 years. We needed a place to store our ATV's, a boat and a trailer. Future Buildings was a good choice for storage in the woods. We got an excellent deal and they delivered to a pretty remote place no problem."

Josh - Roscommon, Michigan

8



Find out more by calling us at **1-800-668-5111** or visiting **FutureBuildings.com**



# FUTURE BUILDINGS - Q Model

The history of the arch style building in North America dates back to 1941 with the design of the original Quonset hut developed for use as military barracks at that time. Since then it has continued to serve a purpose as a very practical outbuilding for both Future Buildings' residential and commercial markets. This single radius, clear-span structure features a very expansive interior that is commonly used for agri-storage as well as large vehicle and equipment garages.

Available in standard sizes ranging from 20' to 150' wide with height limited to half the span or less.

## Our Customers Have Built:


Airplane Hangars • Stables • Hay and Grain Storage • Livestock Barns • Riding Arenas  
Equipment Repair Shops • Skating and Hockey Rinks • Gravel and Sand Storage • Homes



**"Open Space in the Country"**

"I had a small wood storage barn for years and when it finally rotted beyond repair I decided it was time for steel. Future Buildings was one of many I looked at but in the end I had confidence in their quality and the price was right. It took about 5 days to build the structure and a little longer to customize the front. I'm not worrying about this farm building anymore!"

Jim - Selkirk, Manitoba



**DID YOU KNOW?**



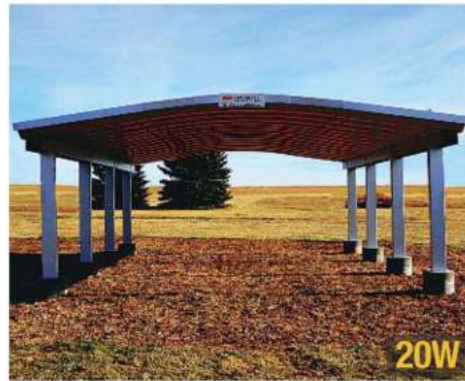
All of our steel buildings can be easily insulated!



# FUTURE BUILDINGS - Carports



Future Buildings also manufactures clear span carports that are a practical, serviceable garage alternative for single and multi-vehicle protection. Future Buildings' Ultimate Carport division offers the perfect coverage specifically developed as a solution for compact spaces. Our carports come in a range of sizes available from 12' wide through to wider canopies at 30'.



**"My Carport is Beating Nature"**

"I was sick of cleaning leaves and bird droppings off my trailer all the time. My friend suggested a Future Buildings carport because I didn't have a lot of room to build an actual garage and they can design them to fit the space. It went up so fast and it is awesome. Joe - 1; Birds - 0!"

Joe - Balsam Lake, Ontario

10



Find out more by calling us at **1-800-668-5111** or visiting **FutureBuildings.com**



# Container Covers & Roofing Systems

We have also worked with our customers to solve other clever roofing, shelter and add-on requirements for both home and various commercial applications as seen here.



30x40 Container Cover



**"Future Buildings is a Great International Supply Partner"**

We are very happy with our new fire truck shelter designed by Future Buildings. They were extremely helpful with the unusual construction by outlining all the necessary requirements as well as their long-distance support as we built it. This structure will serve our city works department for many, many years to come. We highly recommend Future Buildings for any commercial project."

Henk-Jan van Hes - Amsterdam, Netherlands



25x30 Storage Cover



Vehicle Roofing



25x40 Equipment Cover



Industrial Shelters



30x40 Maintenance Cover



Walkways



Passenger Shelters

**TRUE PRICING**



Every FUTURE BUILDING is individually priced to meet your needs and the loads and codes for YOUR exact location. CALL TODAY FOR TRUE PRICING.



# GREAT FINISHING TOUCHES FOR YOUR BUILDING... INSIDE AND OUT

The pre-cut and drilled panels are all laid out on the ground and joined together by hand-tightening the bolts. This forms the arch. Once the arch is assembled, simply lift the arches – brace them at the top - and bolt them into place.



▶ Watch how easily it is done at [www.EasyBuildingAssembly.ca](http://www.EasyBuildingAssembly.ca)



## 12 INDUSTRIAL BASE PLATES

Custom engineered for Future Buildings to provide precision bracing and support, these optional plates are secured by anchor bolts to the concrete foundation



**Standard Service Doors** Pre-engineered man doors for easy installation and walk-thru access



**Overhead Doors** Commercial overhead doors that include the hardware system for easy installation



**Sliding Doors** Heavy duty double, quad or hex sliding doors accommodate large equipment



**Pre-painted Steel Endwalls** Choose from: Forest Green, Stone White, Walnut Brown, Sahara Tan, Plain Steel



**Roof Turbine Vent** Spins to provide continuous fresh air exchange inside your building



**Wall Louver Vent** Aluminum channel frame with open blades deliver excellent cross ventilation



**Vent Adaptors** Custom-cut, bent, punched and pre-caulked to accurately affix venting device to the roof. A great accessory for chimney or piping

Find out more by calling us at **1-800-668-5111** or visiting [FutureBuildings.com](http://FutureBuildings.com)





### PRE-CUT AND CUSTOM-FIT INSULATION SYSTEMS

Ensure interior comfort in all climates with custom-fit vapor-lock insulation systems. Choose the R value that will suit your needs. Comes complete with all hardware and instructions for simple pin and cap installation

### PRE-FORMED SKYLIGHT PANELS

Increase natural interior light with fiberglass panels in translucent clear, green or yellow



### DO-IT-YOURSELF CUSTOM FRONTS FOR THE LOOK OF YOUR CHOICE

Some vinyl and a few tools from the local hardware store and you can add your own custom front wall for a fantastic personalized finish to your building



### CHECK OUT THE ACCESSORY OPTIONS IN THIS FANTASTIC WORKSHOP!



### OPENINGS

Openings for windows and doors are engineered exactly where you want them

# TRUE PRICING



Every FUTURE BUILDING is individually priced to meet your needs and the loads and codes for YOUR exact location. CALL TODAY FOR TRUE PRICING.



# AT FUTURE BUILDINGS WE ARE IN THE BUSINESS OF BUILDING YOUR BUSINESS!



**Manufacturing Facility**



**Hangar**



**Firehouse**



**Driving Range**



**Municipal Works Buildings**



**Industrial Building**



**Compressor Building**



**Carwash**



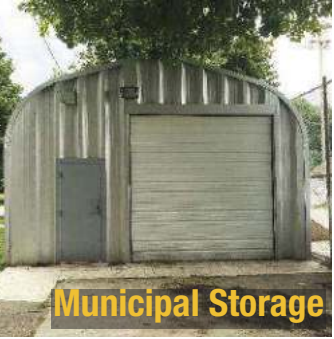
**Small Business**

14

Find out more by calling us at **1-800-668-5111** or visiting **FutureBuildings.com**



Over the decades, we have become the perfect project partner working with thousands of our customers to start, expand or improve their businesses. Our in-house engineers and building specialists are experts in all the critical elements that go into developing commercial steel building structures so that we can ensure delivery on-time and on-budget. Future Buildings is working hard for our customers... everywhere.



**Municipal Storage**



**Auto Dealership**



**Bridge Cover**



**Warehouse**



**Railway Cover**



**Lean-To**



**Truck Repair Shop**



**Winery**



**Oil Pit Facilities**



**Custom Roofing Projects**



**Restaurant**

**TRUE PRICING**



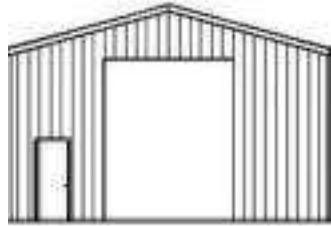
Every FUTURE BUILDING is individually priced to meet your needs and the loads and codes for YOUR exact location. CALL TODAY FOR TRUE PRICING.



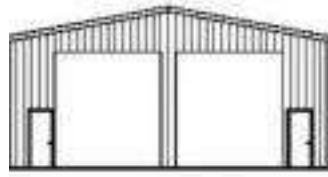


## LOOKING FOR A STRAIGHT WALL STEEL BUILDING? WE CAN HELP YOU!

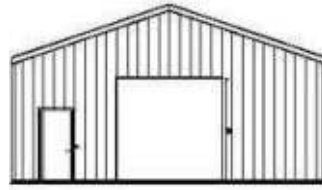
TORO Steel Buildings is our straight wall division providing consumers and contractors with another format of pre-engineered steel building solutions. Along with many other configurations, the following represent some of the most popular TORO straight wall designs:



Example 1



Example 2



Example 3



Example 4



Example 5

## GARAGES AND SERVICE SHOPS

16



30W



35W



40W



45W



40W



25W



45W

Find out more by calling us at **1-877-870-8676** or visiting **ToroSteel.com**

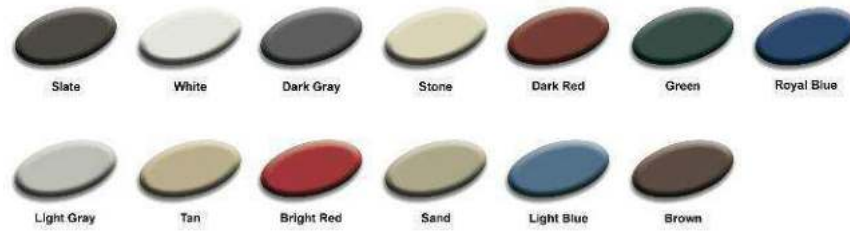


TORO's commercial team has a thorough understanding of industry-related specifications and expertise in total project management, from the design and RFQ response protocol through to site delivery. From a basic backyard storage shed to a complex industrial structure, the engineering and service personnel at TORO is committed to your project from beginning to end.

**Why is a TORO building a smart option?**

Flexible design for almost any garage or repair application • Non-combustible • Choice of colors for property aesthetics • Long term durability and security with a full warranty against rust perforation

**ALL CLADDING AND TRIM FOR TORO BUILDINGS ARE AVAILABLE IN THESE COLORS**



All TORO Buildings come with a full selection of accessories and options including doors, windows, louvers, insulation, down spouts and gutters as well as trims for various joints.



**TRUE PRICING** \$ Every TORO STEEL BUILDING is individually priced to meet your needs and the loads and codes for YOUR exact location. CALL TODAY FOR TRUE PRICING.





# STORAGE AND WAREHOUSING

Why is a TORO building a smart option? Reduces architect and design costs • Engineered to meet or exceed the design requirements for your area • Efficient and expedient occupancy/operation to maximize ROI • Controlled budget and timeline for planning



18



Find out more by calling us at **1-877-870-8676** or visiting **ToroSteel.com**



# AGRICULTURAL, ARENAS AND HANGARS

**Why is a TORO building a smart option?** Long term durability and security with a full warranty against rust perforation • Easily insulated for year-round animal comfort  
 • Smart investment to protect machinery and tools of value • Permits the largest open clear span interior



80W



100W



100W

# COMMERCIAL, INDUSTRIAL AND RETAIL

**Why is a TORO building a smart option?**  
 Widths up to 200 feet • Thermally efficient • Fast and measurable ROI • Attractive design and finish options available



60W



80W



125W



70W



35W

**TRUE PRICING**



Every TORO STEEL BUILDING is individually priced to meet your needs and the loads and codes for YOUR exact location. CALL TODAY FOR TRUE PRICING.





*“The whole team at Future Buildings was just awesome to deal with. Buying the building was the easy part but putting it up was almost as easy. I would highly recommend this company to anyone.”*

*Mike – Lehi, Utah*



**Building for the Future**

**FUTURE BUILDINGS**

1405 Denison Street, Markham, Ontario L3R 5V2

Telephone: **905.477.1894** | Toll-Free: **1.800.668.5111** | Fax: **905.477.3661** | Toll-Free Fax: **1.877.474.4445**

Website: **[www.FutureBuildings.com](http://www.FutureBuildings.com)**